



# SHERMAC

Engineered Equipment  
Transitions



## MINESERVE 4000 SERVICE TRUCK



## EXPERIENCE THAT'S DRIVING A NEW ERA IN VEHICLE ENGINEERING

At Shermac, we've been engineering and manufacturing custom service vehicles and water cartage vehicles for Australia's mining, civil and construction sectors since 2002.

We've earned a deserved reputation for excellence among heavy industry and government organisations alike. But it's not purely the quality, reliability and functionality of our high-performance vehicles that have driven our ongoing growth and the evolution of our range.

Nor is it simply our design, engineering and manufacturing expertise.

It's more fundamental than that.

Listening, evolving, solving.  
The most crucial skill in our proven engineering process is the ability to listen and build relationships.

This is what underpins our expertise in designing and delivering cost-effective, quality-assured solutions that drive performance capacity and add tangible operational and strategic value.

It's the foundation of our global sourcing and procurement network, which gives our clients access to the largest range of high quality products at the lowest fleet and bulk-purchasing prices.

And it's why we now have three distinct divisions, each dedicated to meeting the unique needs of different industries across Australia.





## MORE TAILORED MORE COST-EFFECTIVE

Shermac is regarded as one of Australia's leading manufacturers of mine spec fuel and lubrication service vehicles.

Our service trucks are built to handle any challenge - designed and extensively tested to ensure they perform, even in the harshest and most remote environments.

We pride ourselves in being able to offer solutions to our clients, by listening closely to their needs, and designing and building service vehicles to best suit their operational and budgetary requirements. With this approach, our aim is to help our clients save costs, increase production - and most importantly increase your bottom line.

The off-road service trucks, the larger of Shermac's service fleet, provide an ideal solution for ongoing challenges of heavy equipment refuelling and maintenance in the field.



Contact us to discuss  
**YOUR** unique requirements!

## PERFORMANCE, RELIABILITY, FLEXIBILITY

Reliability is crucial. We understand that service vehicles stand at the fore-front of all mining and civil operations, and that, if they go down, it impacts the entire fleet.

Each service vehicle is custom designed down to the smallest detail, and built with a range of configurable sized tanks to carry diesel, oils, coolant, waste oil, grease, water and degreaser.

Whether you need to service bore fields, minor plant, fixed plant, or large mining plant, we'll design and engineer a vehicle to meet your specifications and operational requirements - a refined workhorse that's the ultimate, reliable, user-friendly, on-site service solution.





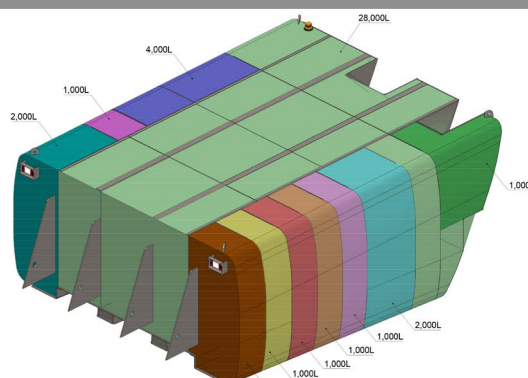
## USABILITY

Shermac truck bodies are ergonomically designed to be easy to use and maintain, with well thought out features - making life easier for the operator and maintenance personnel.



## FLEXIBILITY

Based on our consultation with you, we'll design and manufacture your service truck, ensuring it's built exact for purpose, so you know it's perfectly equipped to meet any challenge in the field.



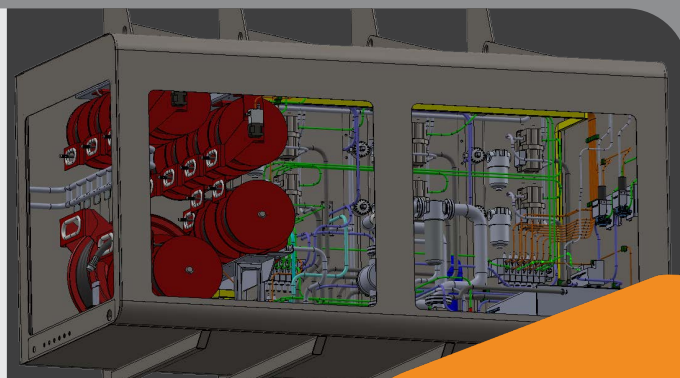
## SAFETY

All of our trucks are built to Australian Standards and your specific mine-spec requirements. Features such as spill control kits, emergency stops, fire extinguishers, safety railing, overfill alarm systems, and hydraulics disengaging when park brake is released all ensure safe, reliable operation.



## RELIABILITY

Every element in every truck we design has been engineered to perform with heavy-duty use in the harshest conditions.



Contact us to discuss  
**YOUR** unique requirements!

1300 799 943  
sales@shermac.com.au  
www.shermac.com.au

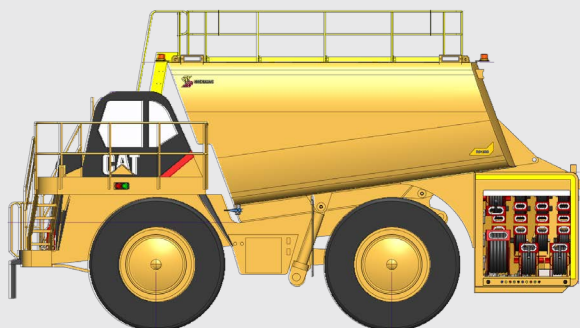
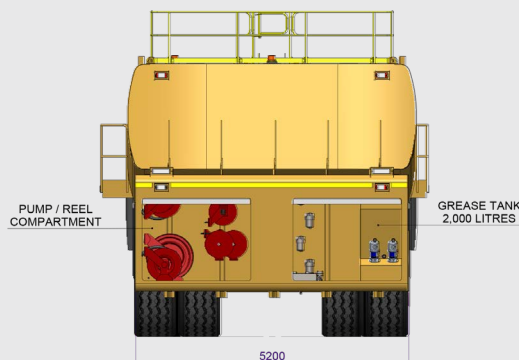
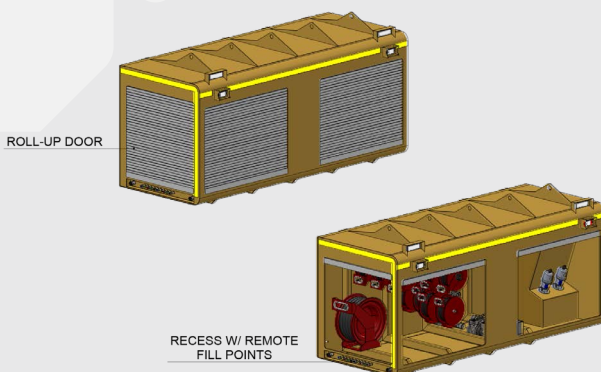
## PUMP AND REEL CABINET

All dispensing equipment is mounted in a large rear dispensing compartment which is easily removable from the main tank unit. This allows for all pumps and reels to be easily accessed for maintenance, without having to enter a confined space.

This design also means 95% of the plumbing and hosing is in one area with a bunded floor, and any small leaks of potentially polluting substances are captured and will not contaminate the ground below.

The pump and reel compartment is designed particularly with mid-life refurbishments in mind. The rear box can be removed and shipped back to a Shermac base location at low cost (as it is not oversize) for refurbishment, while the main tank unit can be inspected and refurbished by a general contractor in the local area. This rear box can also be removed simply in the case of body tilting for major drive train work on the truck.

To minimise the risk of repetitive strain injuries, Shermac actively optimises operator ergonomics on all its vehicles. All hose reels and controls are mounted in an ergonomic position and hose reels are all hydraulic retract for ease of operation.



## SERVICE ACCESS

Our user-friendly access stairs and railings are designed to AS 1657-1992, and provide safe and efficient access to service filter units from the top of the module.



## LIGHTING

Configure the lighting solution that's right for your operations. We offer LED combination lights (high and low level), courtesy lights in the reel compartment and storage areas, as well as operational HID work light solutions.



## TANK MONITOR SYSTEM

Optional sonar tank level gauge system fitted, meaning the operator can tell by the click of a button exactly what all the tank levels are.



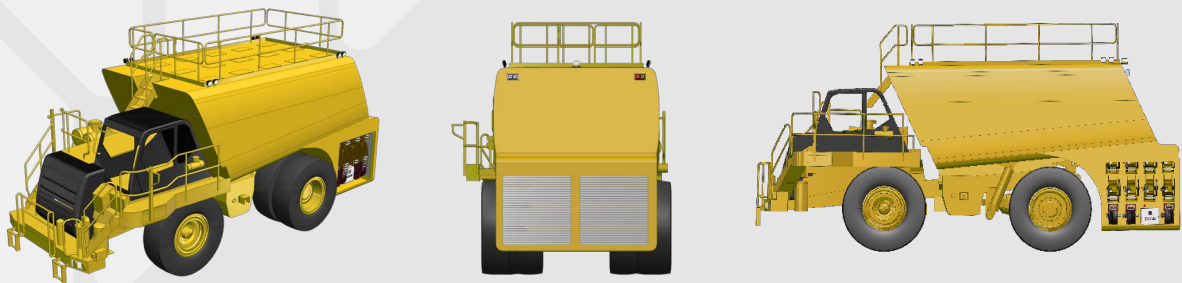
## FLUID MANAGEMENT SYSTEM

Optional fluid management system can measure all hydrocarbons against each machine and the fluids. This greatly improves the traceability of your operation.





## SERVICE BODY TO SUIT CAT773 AND 775



## SERVICE BODY TO SUIT CAT777



Contact us to discuss  
YOUR unique requirements!

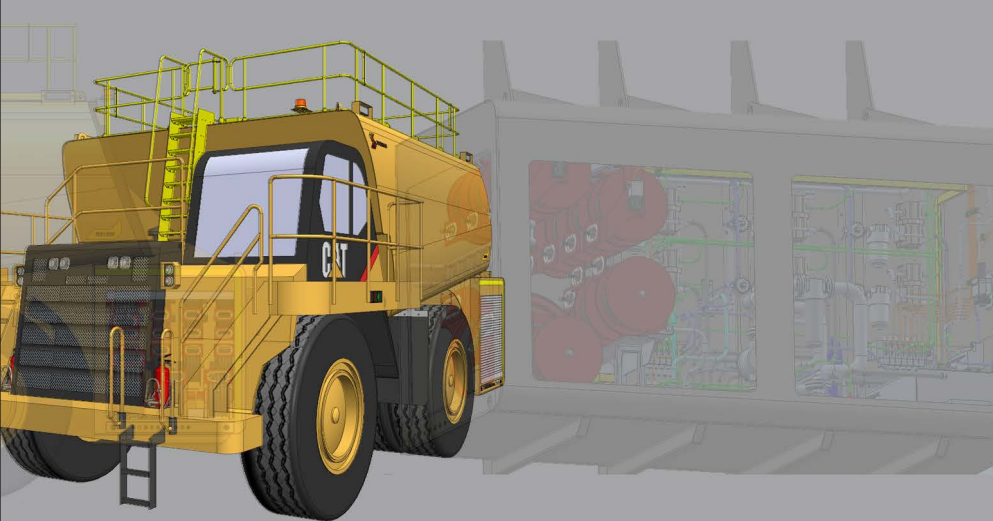


**SHERMAC**  
Engineered Equipment  
Transitions

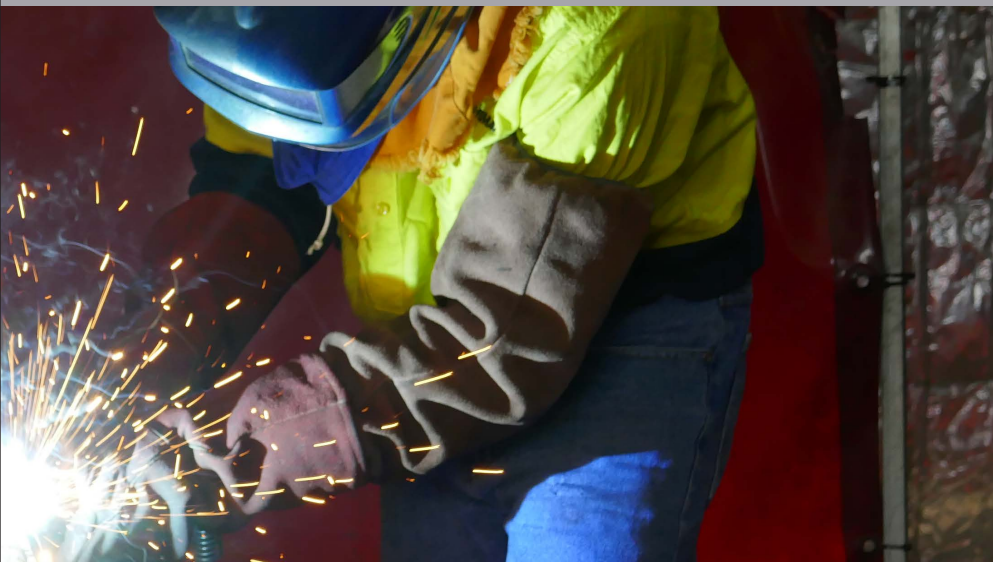




**CONSULTATION AND  
DESIGN**



**MANUFACTURE AND  
ASSEMBLY**



**TESTING AND  
SHIPMENT**



**FINAL FITMENT AND  
PRODUCT SUPPORT**







## **MORE PRODUCTION TIME FROM YOUR EQUIPMENT**

### **WHY WE EXIST**

To help our customers' businesses to be more productive

### **HOW WE DO IT**

By supplying products that are effective, efficient, safe, and easy to use.

### **WHAT WE DO**

Purpose built support vehicles for mining and civil construction work sites





**Shermac Group Pty Ltd**  
ABN 68 381 014 8326

15 Deacon Street  
Dalwallinu 6609  
Western Australia

PO Box 414  
Dalwallinu 6609  
Western Australia

Freecall 1300 799 943  
Telephone 08 9661 2330  
Facsimile 08 9661 2300

[sales@shermac.com.au](mailto:sales@shermac.com.au)  
[www.shermac.com.au](http://www.shermac.com.au)

Driving Performance Capacity

