



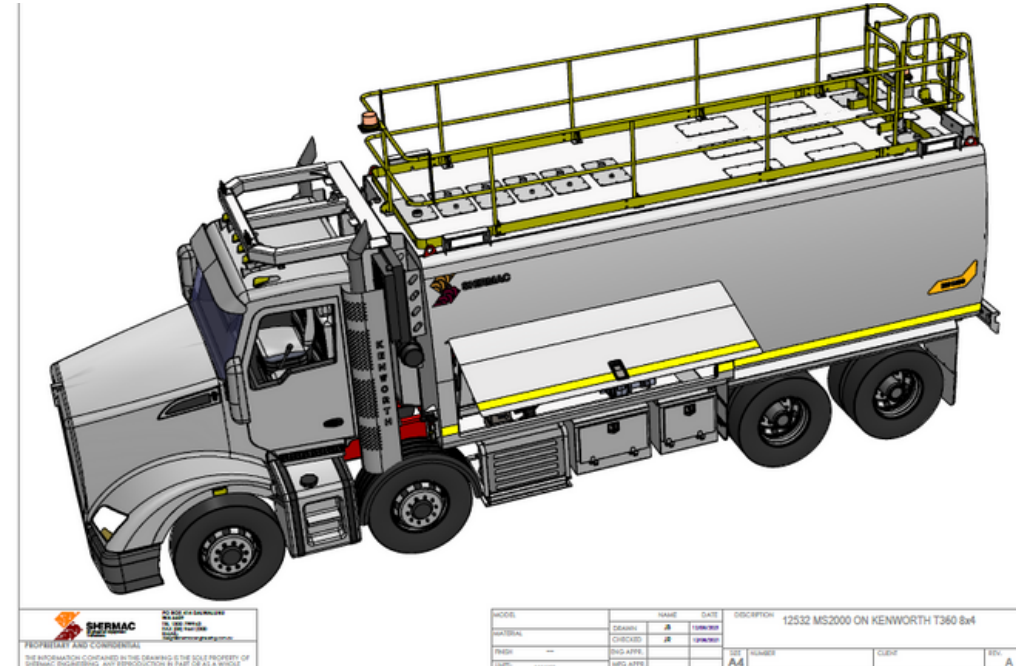
SHERMAC

Engineered Equipment
Transitions

IN STOCK



OFF-ROAD WATER CART
RS4000 to suit Volvo A40 chassis



ON-ROAD WATER CART
MS2000 on Kenworth T360 8x4



ON-ROAD WATER CART
RS3000

STOCK CURRENTLY IN BUILD



ON-ROAD WATER CART
14,000L water tank, to suit 6x4 chassis