



SHERMAC

Engineered Equipment
Transitions



**ROADSERVE 4000 & 5000
WATER CART**

EXPERIENCE THAT'S DRIVING A NEW ERA IN VEHICLE ENGINEERING

Shermac have been manufacturing engineered-for-purpose service vehicles and water carts for Australia's mining, civil and commercial sectors since 2002.

We have earned our reputation for excellence with heavy industry and government organisations alike. But it's not only the quality, reliability and functionality of our high-performance vehicles that have driven our growth and the evolution of our range.

What sets Shermac apart is our design, engineering and manufacturing expertise. However, the most crucial skill in our proven engineering process is the ability to listen, build long-term trusted relationships, and engineer the lowest lifetime-cost-of-ownership vehicles and fleet available on the market.

This is what underpins our expertise in designing and delivering cost-effective, quality-assured solutions that drive performance capacity and add tangible operational and strategic value to your business.

It's the foundation of our global sourcing and procurement network, which gives our clients access to the largest range of high-quality products at the lowest lifetime-cost-of-ownership for fleet and bulk-purchasing prices.

Shermac has three distinct divisions; Mining, Civil and Commercial - each dedicated to meeting the unique needs of different industries across Australia.



COST-EFFECTIVE CONFIGURATIONS

Some vehicle suppliers simply stock and sell standard vehicles. At Shermac, we have identified the optimum configuration for every application, which means you benefit from our years of experience, and will enjoy the lowest lifetime-cost-of-ownership on your new vehicle.

We operate as three distinct divisions - Mining, Civil and Commercial - so we can meet the unique needs of different industries and operating environments across the country.

Before we consider models and specifications, we consult with you to establish your budget, operational and strategic requirements. Only then do we recommend and build the optimum configuration water cart or fleet that meets your needs.



**Contact us
to discuss
YOUR unique
requirements!**



SHERMAC®

Engineered Equipment
Transitions

1300 799 943
sales@shermac.com.au
www.shermac.com.au

PERFORMANCE, RELIABILITY, FLEXIBILITY

Our water trucks are custom designed and extensively tested to ensure optimum weight distribution and performance on any chassis, no matter how tough the environment or challenge.

From 6,000L skid-in water carts, right through to 29,000L semi's, all of our water carts, trucks and vehicles are engineered to your unique technical specifications, giving you the freedom to configure your vehicle to suit your exact fleet requirements.

ONE-STOP-SHOP

Shermac's diverse in-house capabilities include design and engineering, procurement, and complete fabrication capabilities. At Shermac, we do it all, including assembly, testing, hydraulic engineering, auto electrics, blast / paint and commissioning. Our full service includes transport, delivery, operator training, after-sales support and parts.

This end-to-end capability means that Shermac can supply the complete package, and is a one-stop-shop, eliminating the 'middle man'. This full accountability for every aspect of the project provides a much more predictable cost base, with complete control over quality and improved management of project timelines.



SHERMAC®

Engineered Equipment
Transitions

USABILITY

Our water carts are ergonomically designed to be easy to use and maintain. All pipework is hot dip galvanised and mounted externally to the water tank, eliminating pipe corrosion and making way for easy service access.



FLEXIBILITY

Based on our consultation with you, we will design and manufacture your water cart, ensuring it's built for purpose, so you know it's perfectly equipped to meet any cartage and dust suppression challenge in the field.



SAFETY

Operator safety is always first at SHERMAC. Our off-road water carts are built with a low centre of gravity, increasing stability and safety. All our trucks are built to Australian Standards and are packed with safety features to help safeguard the operator.



RELIABILITY

Every element in every truck has been engineered to perform with heavy-duty use in the harshest conditions. For example, SHERMAC's water tanks are designed with unique curved sides to give extra strength and integrity.



**Contact us
to discuss
YOUR unique
requirements!**



SHERMAC®

Engineered Equipment
Transitions

1300 799 943
sales@shermac.com.au
www.shermac.com.au

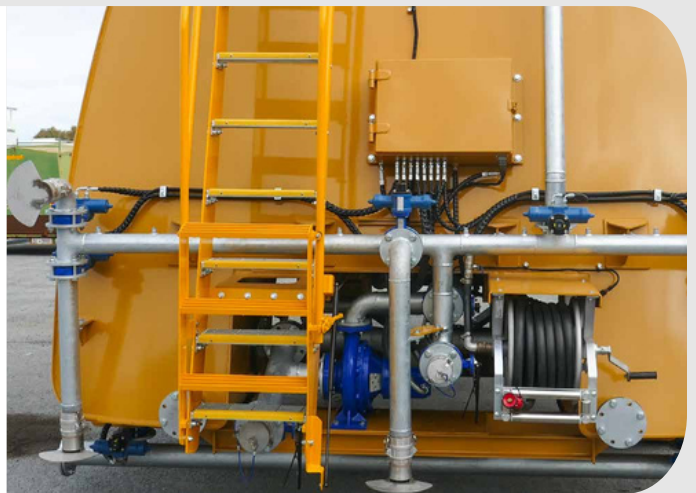
WATER APPLICATION SYSTEMS

Our water application systems include left and right batter sprays, horizontal central fan sprays, hydraulic or electric controlled water cannons (with optional foam injection system), configurable dribble bar options, optional front sprays and scope for additional custom spray kits.



WATER PUMP

Fitted with quality Australian-made hydraulic powered centrifugal pumps on all off-road water carts to ensure optimum performance. Pumps are mounted in an easily accessible location for servicing.



CAB CONTROLS

All our water carts include a conveniently placed in-cab spray and cannon control panel, providing total operating control from the comfort of the cabin.



SHERMAC®

Engineered Equipment
Transitions

SERVICE ACCESS

Each unit is built with easily accessible tank lids. Our optional user-friendly access stairs and railings are designed to AS 1657-1992, and provide safe and efficient access to tank lids from the top of the module.



MINE-SPEC

Shermac water carts are fitted with everything needed to comply with mine site compliance, including:

- Hand railing access ladders and self-closing gates to AS1657-2013 standards
- High visibility tape around perimeter of the tank, high visibility asset numbers on front, rear, left and right of the tank
- High and low level taillights
- Any other mine specifications as required



LOW CENTRE OF GRAVITY

Shermac's tanks are designed to keep the centre of gravity as low as possible. By following the slope of the chassis and the curved sides means the top of the tank is narrower than the bottom, helping to keep the weight as low as possible. Tanks are designed to correctly load the axles of the carrier when full.



**Contact us
to discuss
YOUR unique
requirements!**



SHERMAC®

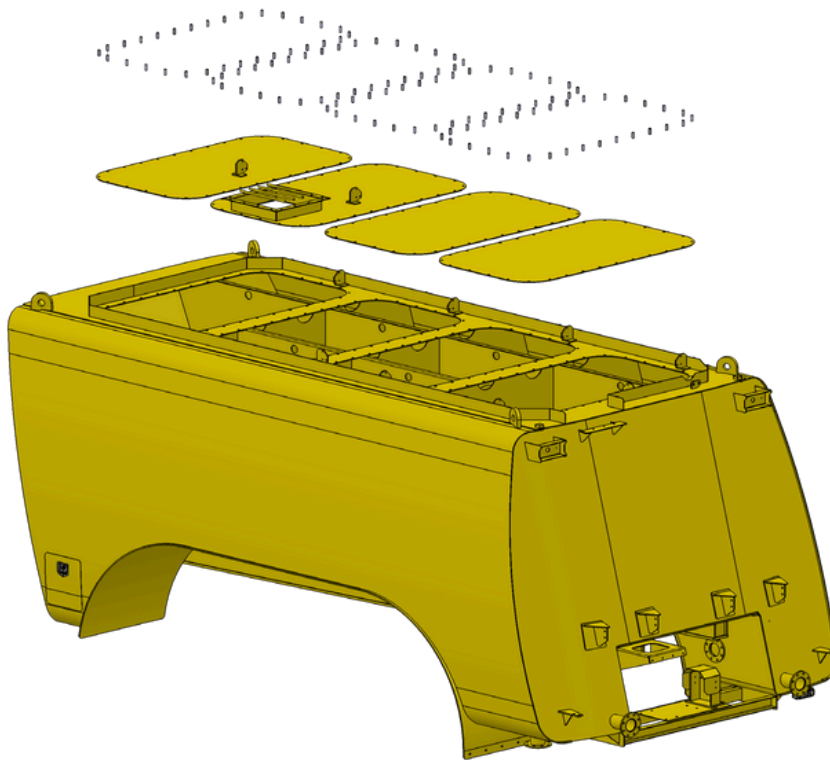
Engineered Equipment
Transitions

1300 799 943
sales@shermac.com.au
www.shermac.com.au

UNIQUE INTERNAL CORROSION PROTECTION METHOD

The most important process in building a water cart is ensuring the internal coating is properly applied, and this demands meticulous preparation.

All internal profile cut edges are ground, and all surfaces are grit blasted to class 2.5 and inspected before coating to ensure there are no lapped welds or welding spatter. All internal edges and seams are brushed with an epoxy tank liner, and the tank is internally coated with two coats of tank liner.

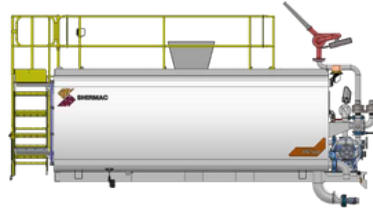
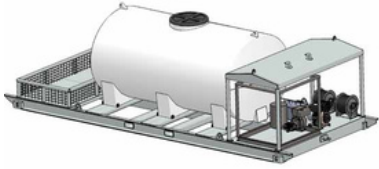


SHERMAC®

Engineered Equipment
Transitions

THE SHERMAC WATER CART RANGE

ROADSERVE 1000 SERIES



ROADSERVE 1500 SERIES



ROADSERVE 2000 SERIES



ROADSERVE 3000 SERIES



ROADSERVE 4000 SERIES



ROADSERVE 5000 SERIES



**Contact us
to discuss
YOUR unique
requirements!**



SHERMAC®

Engineered Equipment
Transitions

1300 799 943
sales@shermac.com.au
www.shermac.com.au

“We only work with suppliers that genuinely share our worldview and they need to stand behind their product. We like to work with Shermac. We have an alignment of values and a very similar ethos to Shermac. They are a successful business, a great company to work with and, simply, nice people.”

Supporting WA companies and their families is a priority for KEE Group and time and time again Shermac raise the bar on market leading engineering and good old fashioned customer service. We sincerely thank our friends at Shermac for their relentless pursuit first class engineering and the magnificent moxy water cart fabrications.”

- Damon Spiers, Kee Group Co-Founder



SHERMAC®

Engineered Equipment
Transitions

SHERMAC WORK WITH OUR CLIENTS TO:

INCREASE their productivity **DECREASE** their machinery downtime **SAVE** on their ongoing operating costs **MINIMISE** their lifetime cost of ownership **INCREASE** their operational safety **INCREASE** their bottom line

“

The end product was exactly how we hoped it would be delivered. Sales and Production were very easy to deal with, listening to what we required and delivered the product on time, as per quote and built to a quality standard we expected.

“

Shermac were easy to deal with and supplied a high-quality service truck body. The fitment to the truck was done quickly and without fuss. I would highly recommend Shermac to anyone.

“

Shermac were professional and knowledgeable throughout the whole quote, design and build process. They were fully accountable for the build and delivered it on time, to budget and with great quality.

“

Great company to deal with, very professional in all aspects of the contract, superb quality and workmanship, would highly recommend them.

“

The truck is going exceptionally well. Shermac certainly can take the credit for a great water tank design and quality engineering. The sprays have so much more coverage that we are covering what was a 12-hour shift two hours early!



Driving Performance Capacity

Shermac Australia Pty Ltd

ABN 68 381 014 8326
15 Deacon Street
Dalwallinu 6609
Western Australia

Perth Support Office
18 Radius Loop
Bayswater 6053
Western Australia

QLD Support Office
Unit 10 / 300 Lavarack Ave
Pinkenba, QLD 4008
Australia

PO Box 414
Dalwallinu 6609
Western Australia

Freecall 1300 799 943
Telephone 08 9661 2330
Facsimile 08 9661 2300
sales@shermac.com.au
www.shermac.com.au

