



**SHERMAC**

Engineered Equipment  
Transitions



**MINESERVE 4000/5000 OFF  
ROAD SERVICE TRUCKS**



# EXPERIENCE THAT'S DRIVING A NEW ERA IN VEHICLE ENGINEERING

Shermac have been manufacturing engineered-for-purpose service vehicles and water carts for Australia's mining, civil and commercial sectors since 2002. We have earned our reputation for excellence with heavy industry and government organisations. But it's not only the quality, reliability and functionality of our high-performance vehicles that have driven our growth and the evolution of our range. What sets Shermac apart is our design, engineering and manufacturing expertise. However, the most crucial skill in our proven engineering process is our ability to listen, build long-term trusted relationships, and engineer the lowest lifetime-cost-of-ownership vehicles and fleet available on the market. This underpins our expertise in designing and delivering cost-effective, quality-assured solutions that drive performance capacity, and add tangible operational and strategic value to your business. It's the foundation of our global sourcing and procurement network, which gives our clients access to the largest range of high-quality products at the lowest lifetime-cost-of-ownership for fleet and bulk-purchasing clients. Shermac has three distinct divisions; Mining, Civil and Commercial - each dedicated to meeting the unique needs of different industries across Australia.



**SHERMAC®**  
Engineered Equipment  
Transitions

1300 799 943  
[sales@shermac.com.au](mailto:sales@shermac.com.au)  
[www.shermac.com.au](http://www.shermac.com.au)

## COST-EFFECTIVE CONFIGURATIONS

Shermac is regarded as one of Australia's leading manufacturers of mine-spec fuel and lubrication service vehicles.

Our service trucks are built to handle any challenge; designed and extensively tested to ensure optimum performance, even in the harshest and most remote environments.

We pride ourselves on offering solutions to our clients, by listening closely to their needs, and designing and building service vehicles to best suit their operational and budgetary requirements. We aim is to help our clients save costs, increase production; and most importantly increase your bottom line.

The off-road service trucks, the larger of Shermac's service fleet, provide an ideal solution for ongoing challenges of heavy equipment refuelling and maintenance in the field.



**SHERMAC®**

Engineered Equipment  
Transitions

1300 799 943  
[sales@shermac.com.au](mailto:sales@shermac.com.au)  
[www.shermac.com.au](http://www.shermac.com.au)



## PERFORMANCE, RELIABILITY, FLEXIBILITY

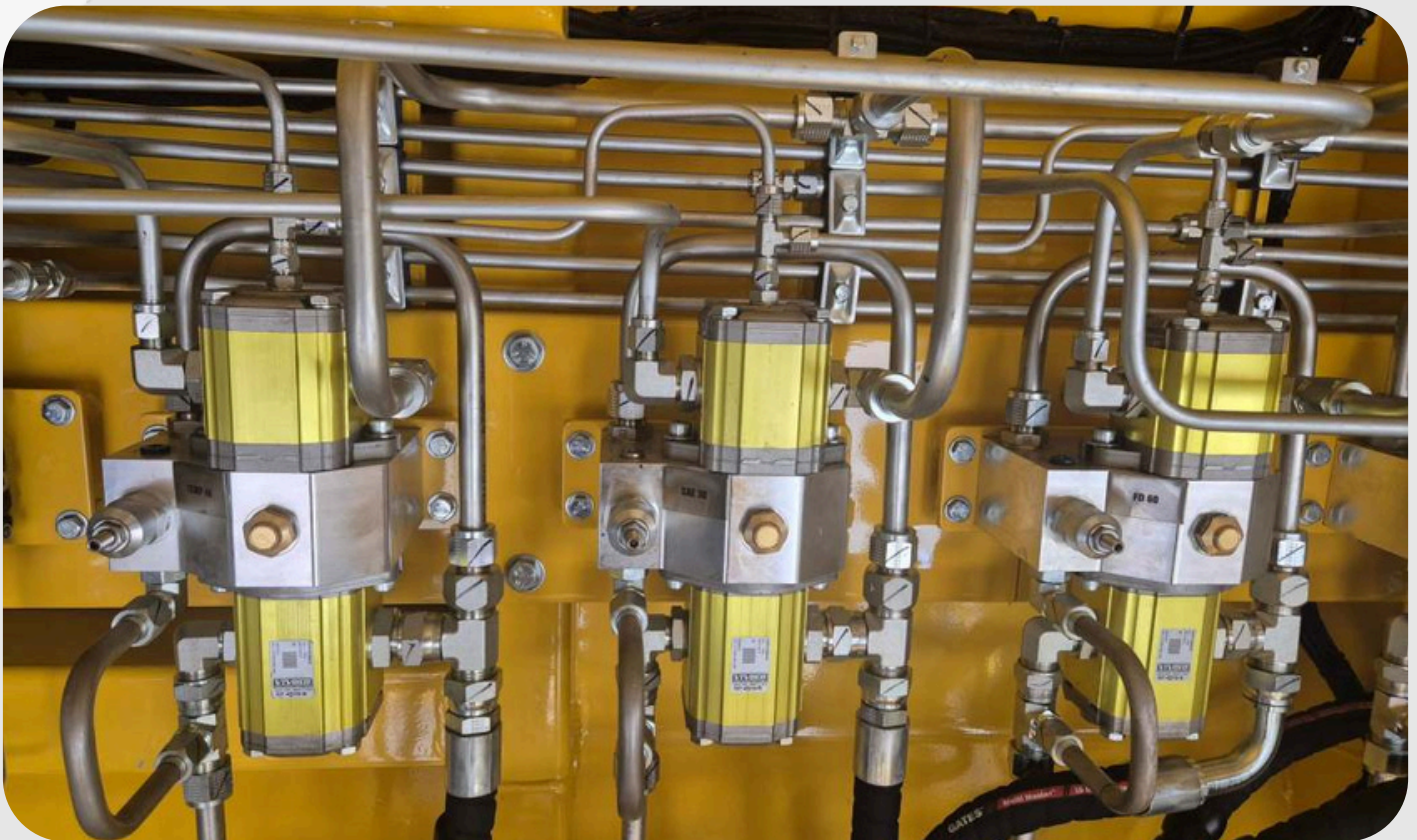
Reliability is crucial. We understand that service vehicles stand at the forefront of all mining and civil operations, and that, if they go down, it impacts the entire fleet.

Each service vehicle is custom designed down to the smallest detail, and built with a range of configurable sized tanks to carry diesel, oils, coolant, waste oil, grease, water and degreaser.

## ONE STOP SHOP

Shermac's diverse in-house capabilities include design and engineering, procurement, complete fabrication capabilities including assembly, testing, hydraulic engineering, auto electric, blast/paint and commissioning, and extends to transport, delivery, operator training, after-sales support and parts.

This end-to-end capability means that Shermac can supply a the complete package, and is a one-stop shop throughout the process, eliminating the 'middle man'. This full accountability for every aspect of the project provides a predictable cost base, with complete control over quality and improved management of project timelines.



**SHERMAC®**

Engineered Equipment  
Transitions

1300 799 943  
[sales@shermac.com.au](mailto:sales@shermac.com.au)  
[www.shermac.com.au](http://www.shermac.com.au)



## USABILITY

Shermac vehicles are designed specifically with usability and maintenance requirements in mind. For operators, controls and storage areas are ergonomic, easy to access, use, and clean.



## FLEXIBILITY

Based on our consultation with you, Shermac will design and manufacture your service truck, ensuring it's built for purpose, so you know it's perfectly equipped to meet any challenge in the field. Shermac work with you to select the optimum configuration and design for your application.



## SAFETY

Our service trucks are built to Australian Standards and are packed with safety features to help safeguard the operator. Features such as spill control kits, emergency stops, fire extinguishers, safety railing, overfill alarm systems, and hydraulics disengaging when park brake is released all ensure safe, reliable operation.



## RELIABILITY

Shermac stand by the components we use in our build, and the reliability of our products. Our service trucks are engineered to perform with heavy-duty use in the harshest conditions, maximising uptime and providing the lowest lifetime cost of ownership.



**SHERMAC®**  
Engineered Equipment  
Transitions

1300 799 943  
[sales@shermac.com.au](mailto:sales@shermac.com.au)  
[www.shermac.com.au](http://www.shermac.com.au)



## FILTRATION SYSTEM

Shermac recognise the requirements for fluid purity, and effective filtration in fluid delivery systems for diesel engines. The optional filtration system is engineered to deliver high standards of filtration. Filter units are conveniently placed for easy and safe servicing.



## PAINT/APPEARANCE

Specify your vehicle's colour. We grit-blast and paint using a quality two-pack epoxy paint system internally and externally, with optional corrosion protection systems for operation in corrosive site conditions.



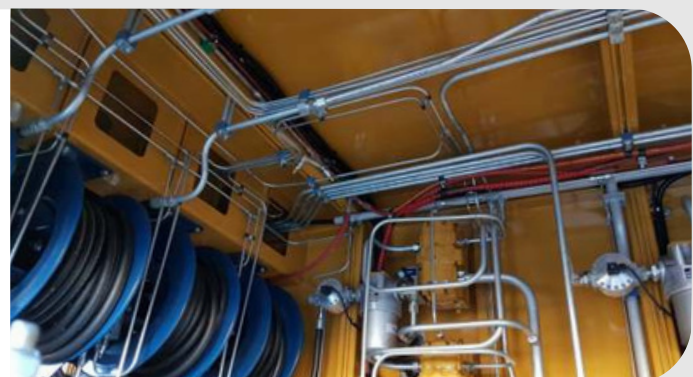
## WEIGHT DISTRIBUTION

Shermac understand the importance of correct weight distribution on a chassis. Our engineers utilise technology that allows them to exactly measure vehicle load and to ensure that the load is properly distributed between the axles.



## HIGH FLOW FLUID DISPENSING

Shermac dispensing systems are designed to maximise flow rates, reducing downtime and increasing productivity.



**SHERMAC®**  
Engineered Equipment  
Transitions

1300 799 943  
[sales@shermac.com.au](mailto:sales@shermac.com.au)  
[www.shermac.com.au](http://www.shermac.com.au)



## SERVICE ACCESS

Our user-friendly access stairs and railings are designed to AS 1657-1992, and provide safe and efficient access to service filter units from the top of the module.



## LIGHTING

Configure the lighting solution that's right for your operations. We offer LED combination lights (high and low level), courtesy lights in the reel compartment and spare storage area on the left side, as well as operational HID work light solutions.



## TANK MONITOR SYSTEM

Optional tank level gauge system fitted, meaning the operator can see tank levels with the click of a button.



## FLUID MANAGEMENT SYSTEM

Optional fluid management system can measure all hydrocarbons against each machine and the fluids. This greatly improves the traceability of your operation.



**SHERMAC®**

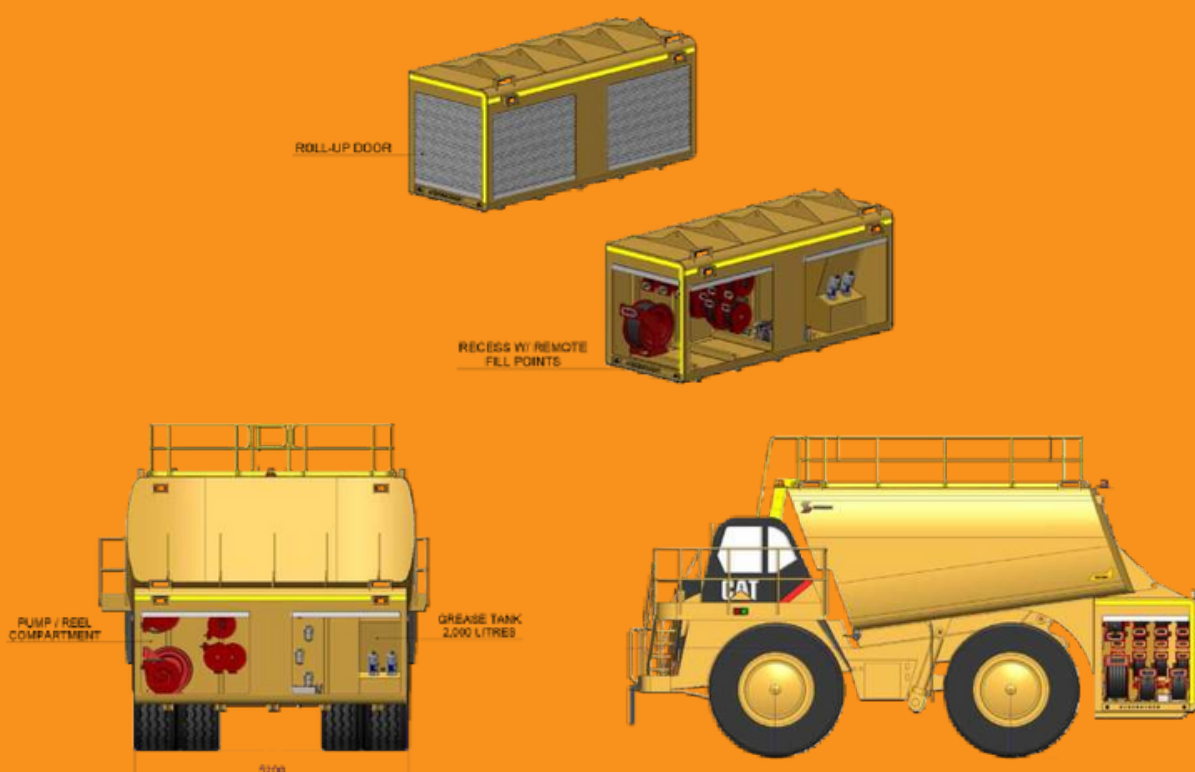
Engineered Equipment  
Transitions

1300 799 943  
[sales@shermac.com.au](mailto:sales@shermac.com.au)  
[www.shermac.com.au](http://www.shermac.com.au)



## PUMP AND REEL CABINET

All dispensing equipment is mounted in a large rear dispensing compartment which is easily removable from the main tank unit. This allows for all pumps and reels to be easily accessed for maintenance, without having to enter a confined space. This design also means 95% of the plumbing and hosing is in one area with a bunded floor, and any small leaks of potentially polluting substances are captured and will not contaminate the ground below. The pump and reel compartment is designed particularly with mid-life refurbishments in mind. The rear box can be removed and shipped back to a Shermac base location at low cost (as it is not oversize) for refurbishment, while the main tank unit can be inspected and refurbished by a general contractor in the local area. This rear box can also be removed simply in the case of body tilting for major drive train work on the truck. To minimise the risk of repetitive strain injuries, Shermac actively optimises operator ergonomics on all its vehicles. All hose reels and controls are mounted in an ergonomic position and hose reels are all hydraulic retract for ease of operation.





**CONSULTATION  
AND DESIGN**

**MANUFACTURE  
AND ASSEMBLY**

**TESTING AND  
SHIPMENT**

**FINAL FITMENT  
AND PRODUCT  
SUPPORT**



**SHERMAC®**

Engineered Equipment  
Transitions

1300 799 943  
[sales@shermac.com.au](mailto:sales@shermac.com.au)  
[www.shermac.com.au](http://www.shermac.com.au)

# THE RANGE

## MINESERVE 1000 SERIES



## MINESERVE 1500 SERIES



## MINESERVE 4000 SERIES



## MINESERVE 5000 SERIES



**SHERMAC®**

Engineered Equipment  
Transitions

1300 799 943  
[sales@shermac.com.au](mailto:sales@shermac.com.au)  
[www.shermac.com.au](http://www.shermac.com.au)



# TESTIMONIALS

## SHERMAC WORK WITH OUR CLIENTS TO:

**INCREASE** their productivity **DECREASE** their machinery downtime **SAVE** on their ongoing operating costs **MINIMISE** their lifetime cost of ownership **INCREASE** their operational safety **INCREASE** their bottom line

“

*“The end product was exactly how we hoped it would be delivered. Sales and Production were very easy to deal with, listening to what we required and delivered the product on time, as per quote and built to a quality standard we expected.” “Shermac design vehicles differently. They have a knack for being able to reconfigure a truck so that, for example, where additional fuel tank capacity but less oil might be needed, they can come up with a design that provides this.”*

“

*“Shermac were easy to deal with and supplied a high quality service truck body. The fitment to the truck was done quickly and without fuss. I would highly recommend Shermac to anyone.” “Shermac were professional and knowledgeable throughout the whole quote, design and build process. They were fully accountable for the build and delivered it on time, to budget and with great quality.” “Great company to deal with, very professional in all aspects of the contract, superb quality and workmanship, would highly recommend them.”*



**SHERMAC®**

Engineered Equipment  
Transitions

1300 799 943  
[sales@shermac.com.au](mailto:sales@shermac.com.au)  
[www.shermac.com.au](http://www.shermac.com.au)

View the range below



Shermac Australia Pty Ltd

ABN 68 381 014 8326  
15 Deacon Street  
Dalwallinu 6609  
Western Australia

Perth Support Office  
18 Radius Loop  
Bayswater 6053  
Western Australia

QLD Support Office  
Unit 10 / 300 Lavarack Ave  
Pinkenba, QLD 4008  
Australia

PO Box 414  
Dalwallinu 6609  
Western Australia

Freecall 1300 799 943  
Telephone 08 9661 2330  
Facsimile 08 9661 2300  
[sales@shermac.com.au](mailto:sales@shermac.com.au)  
[www.shermac.com.au](http://www.shermac.com.au)